

phil winter's



marketing  
communications

Visual Communication Material Design

302 Washington St., #159  
San Diego, CA 92103  
ph: 800-803-8832  
fax: 888-302-8832  
e-mail: phil@philwinter.com

- personalized postcards
- practice newsletters
- practice brochures
- personalized wall posters

**HANDLING NOTICE:**

Handle this paper carefully to avoid breaking perforations before printing. Laser postcards should be stored in a cool, dry place.

**MANUAL TRAY:**

Laser printers differ in their paper handling capabilities. You should test this paper one sheet at a time to determine your printer's paper handling abilities. The multi-purpose manual tray or single-sheet feeding with rear tray output may be required. Consult your printer's instruction manual for additional information.

**PET HEALTH AWARENESS LASER POSTCARDS**

**New Canine Heartworm Guidelines**

The American Heartworm Society (AHS) has released new canine heartworm guidelines. It is estimated that currently more than 1 million dogs in the United States are infected with heartworms. Environmental changes created by humans, changes in natural climatic conditions, and animal movement have increased heartworm infection potential. The new guidelines include the following recommendations:

- Annual testing for heartworm disease in all areas of the United States
- Year-round administration of prevention drugs to increase compliance, control zoonotic parasites and prevent heartworm disease.

**New Canine Heartworm Guidelines**

The American Heartworm Society (AHS) has released new canine heartworm guidelines. It is estimated that currently more than 1 million dogs in the United States are infected with heartworms. Environmental changes created by humans, changes in natural climatic conditions, and animal movement have increased heartworm infection potential. The new guidelines include the following recommendations:

- Annual testing for heartworm disease in all areas of the United States
- Year-round administration of prevention drugs to increase compliance, control zoonotic parasites and prevent heartworm disease.

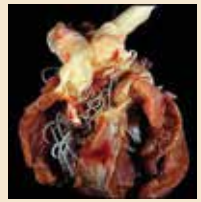
**New Canine Heartworm Guidelines**

The American Heartworm Society (AHS) has released new canine heartworm guidelines. It is estimated that currently more than 1 million dogs in the United States are infected with heartworms. Environmental changes created by humans, changes in natural climatic conditions, and animal movement have increased heartworm infection potential. The new guidelines include the following recommendations:

- Annual testing for heartworm disease in all areas of the United States
- Year-round administration of prevention drugs to increase compliance, control zoonotic parasites and prevent heartworm disease.

**HEARTWORM DISEASE –  
one bite is all it takes!**

Heartworm disease in animals is a serious health threat that can ultimately result in heart failure and death. **ONE BITE** from an infected mosquito can transmit heartworms to your pet. Dogs are the most common victims, but cats, coyotes and other animals are also susceptible. The heartworms restrict blood flow and cause organ damage and ultimately death. Symptoms include: coughing, labored breathing, and heart failure. Treatment is available for dogs, although it is expensive and may cause complications.

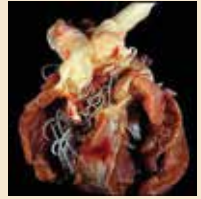


**Prevention is the key to your pet's protection –**

We recommend annual testing your dog for heartworms. Once a month prescription medication is required to protect your pet during the year. This medication destroys any immature heartworms that exist in your pet's bloodstream.

**HEARTWORM DISEASE –  
one bite is all it takes!**

Heartworm disease in animals is a serious health threat that can ultimately result in heart failure and death. **ONE BITE** from an infected mosquito can transmit heartworms to your pet. Dogs are the most common victims, but cats, coyotes and other animals are also susceptible. The heartworms restrict blood flow and cause organ damage and ultimately death. Symptoms include: coughing, labored breathing, and heart failure. Treatment is available for dogs, although it is expensive and may cause complications.

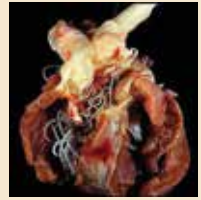


**Prevention is the key to your pet's protection –**

We recommend annual testing your dog for heartworms. Once a month prescription medication is required to protect your pet during the year. This medication destroys any immature heartworms that exist in your pet's bloodstream.

**HEARTWORM DISEASE –  
one bite is all it takes!**

Heartworm disease in animals is a serious health threat that can ultimately result in heart failure and death. **ONE BITE** from an infected mosquito can transmit heartworms to your pet. Dogs are the most common victims, but cats, coyotes and other animals are also susceptible. The heartworms restrict blood flow and cause organ damage and ultimately death. Symptoms include: coughing, labored breathing, and heart failure. Treatment is available for dogs, although it is expensive and may cause complications.



**Prevention is the key to your pet's protection –**

We recommend annual testing your dog for heartworms. Once a month prescription medication is required to protect your pet during the year. This medication destroys any immature heartworms that exist in your pet's bloodstream.